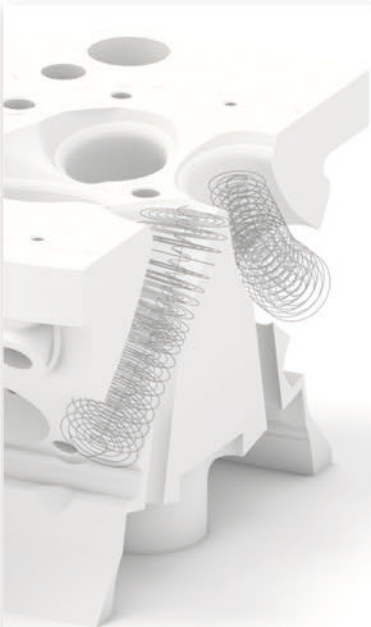
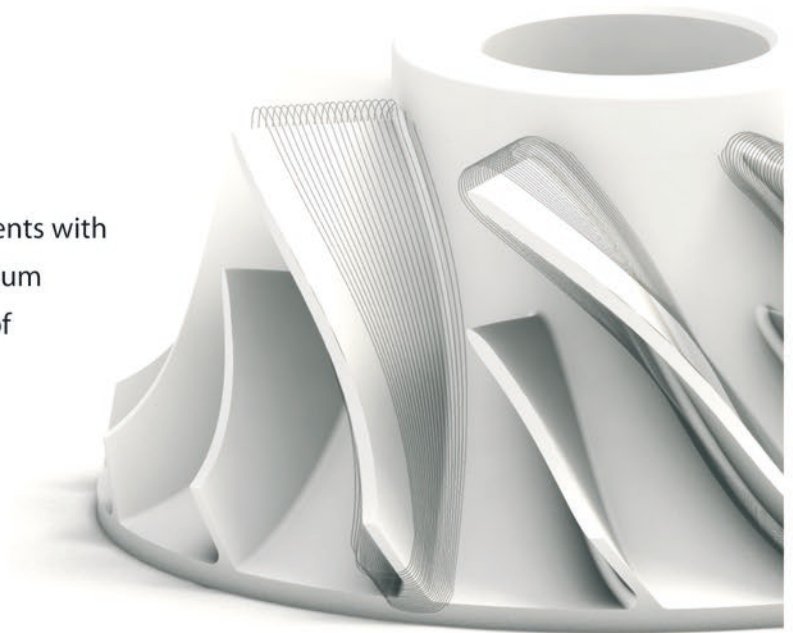




5-Axis Component

Industry proven CAD/CAM Software Components with generic surface based cycles providing maximum programming flexibility for the vast diversity of parts up to part specific tailored applications for maximum automation and safety.



Key Benefits

- State of the Art Technology
- Proven in day-to-day use with 10,000's of customers
- Reduced Time to Market
- Cost effective to implement

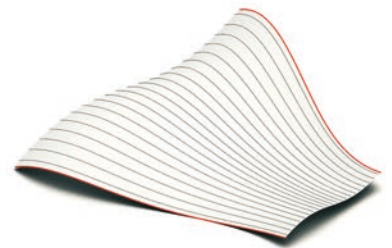
Image: Port Machining



Basics

- Tool Types – sphere, bull, endmill, taper, lollipop
- Tools – Flute, Shaft, Arbor, Holder
- Input – Solid/STL Mesh, NURBS Surfaces, DXF-Style Boundary Data
- Output – CL-Style Toolpath
- Toolpath Output all Machine Types – Table/Table, Table/Head, Head/Head

Image: 5-Axis Finishing



Machining Highlights

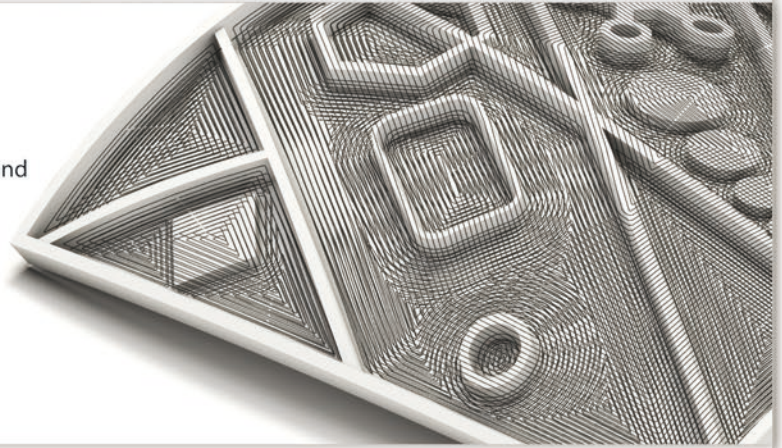
- NURBS Surfaces, STL Mesh or Wire-Frame Geometry
- Multi-Pass Roughing Techniques
- SWARF Machining for Side Wall Machining
- 3 to 5-Axis Toolpath Conversion
- 4-Axis Rotary Machining
- Strategies for Blade, Blisk and Impeller Machining
- Machining Direction for 3+2-Axis Machining

Image: 3 to 5-Axis Conversion

Roughing

- Multi-Pass Roughing Z- or XY Cut Increments
- Adaptive Roughing automatically chooses best Entry, Exit and Link Strategies
- Automatic Collision Avoidance
- Support for 3D Stock Model to minimize Air Cutting and optimize Feedrate
- Multi-Axis Plunge Roughing

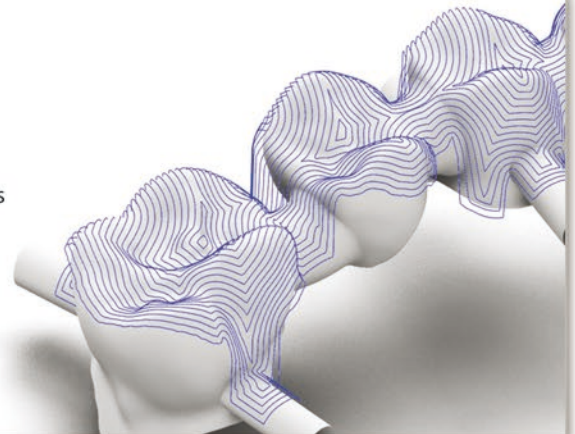
Image: 5-Axis Roughing



Finishing

- SWARF Machining for Side Wall Machining
- Flowline Cutting for Blade Machining
- Geodesic Machining to Machine Undercuts, including Morph and Spiral Options
- Tool Axis Control based on Machine Limits
- Full Cusp Height Control
- Gouge and Collision Free Leads/Links/Retracts

Image: 5-Axis Finish Machining



Advanced Finishing

- Fast, automated Machining Strategies for complex Components, e.g.
 - Blades
 - Blisks
 - Impellers
 - Automotive Ports
- 3-5 Axis Conversion (3-Axis Toolpaths may be provided by Host System or ModuleWorks' 3-Axis Machining Component)

Image: Machined Blisk



Related Products

For information on other CAD/CAM components, including simulation and 3-axis toolpaths, visit:
www.moduleworks.com



ModuleWorks GmbH
Aachen, Germany
Tel: +49 241 99 000 40
info@moduleworks.com
www.moduleworks.com

TecnoLinc Limited
Aichi, Japan
Tel: +81 568 62 9119
toiawase@tecnolinc.com
www.tecnolinc.com



Sign up for our Newsletter at:
www.moduleworks.com

